



**DESIGNED BY XPERTS.  
FOR EXPERTS.**



**Tools & Consumables v9**



In 2010, a team of experienced, professional window fitters realised that many of the tools used within the glazing industry were not actually intended for that purpose. To address this gap in the market, the Xpert brand was born, giving fenestration professionals a range of tried-and-tested tools, hardware and equipment essentials they can rely on every day.

Our products help fabricators and fitters achieve the best results in less time because they've been designed with inside, hands-on knowledge of how they are really used in the workplace – that includes the bad habits! The result is practical, proven kit preferred by trade professionals because it eliminates many of the irritations associated with employing general-purpose tools and consistently delivers the desired results.



**Xpert Mitre Shears**

*“These shears are great for cutting rubber gaskets but also for cutting trims for windows and doors. They are very well made as I use them probably every day and they are still sharp and working fine.”*

*Jack Warner*

## Gasket Shears & Snips

Easily cut through trims and gaskets again and again with these hard-wearing fitter’s toolbox essentials.



**Solide Blade  
Mitre / Gasket / Trim Shear**

- Multi angled base: 45-90°
- Cushioned grip handles for extra comfort/safety
- High quality
- For replacement blades and base plates see page 4

**GKT03104**



**Quick Change Blade  
Universal Mitre / Gasket  
/ Trim Shear**

- Multi angled base: 45-90°
- Accepts trim and utility blades
- Cushioned grip handles for extra comfort/safety
- For replacement blades and base plates see page 4

**GKT03804**



**Gasket Snips**

- Length: 140mm
- For cutting gasket and tin

**GKT20000**

# Knives & Blades

Specialist cutting tools and spares tough enough to tackle all kinds of glazing jobs.



## 32mm Chisel Knife / Bead Knife

- 32mm wide stiff polished chrome chisel blade
- Ideal for removing window beads
- Cushioned grip handle with steel end cap

**KNF10001**



## 10 in 1 Multi-Purpose Knife

- 75mm stiff polished chrome blade
- Cushioned grip handle with steel end cap
- Multi functions include: nail puller, knife, bottle opener, scraper, spreader etc.

**KNF10002**



## Heavy Duty Utility Knife

- Zinc alloy case with TPR handle
- Quick blade changing and 3-stage blade locking
- Internal blade storage

**KNF10000**



## Utility Knife Blades

- Heavy duty blades
- 0.6mm thickness

10 pack - **BLDCT09**  
100 pack - **BLDCT10**



## Spare Base Plate for Mitre Shears

- Replacement base plate for GKT03104 Xpert solid blade mitre/gasket/trim shears and GKT03804 Xpert universal mitre/gasket/trim shears

**GKT03106**

Scan the code for our installation guide



## Replacement SK5 Blade

- Replacement blade for GKT03104 Xpert solid blade mitre/gasket/trim shears

**GKT03105**

Scan the code for our installation guide



# Knives & Guides

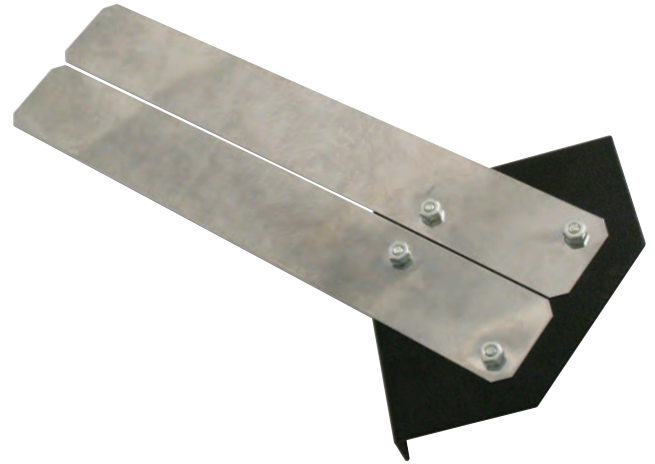
Specialist cutting tools and spares tough enough to tackle all kinds of glazing jobs.



## Moon / Sprue Knife

- Sharp stainless steel blade
- Non-slip cushioned handle for comfort/safety
- Ideal for removing weld sprues on PVCu windows or as a general purpose knife

**DCK10000**



## Sprue Guide

- 0.4mm sprue guide allows fast and accurate removal of the weld sprue on PVCu welded profiles when used with the industry standard moon knife

**SPRUEGUIDE**



### Xpert Chisel Knife

*"...this was by far the best tool for the job. It's also very sturdy and I'm sure it will last a long time."*

*David Torbett*

# Glazing Tools

Must-have tools and accessories to make glass fitting and installation quicker, easier and safer.



## 3 Cup Aluminium Body Suction Lifters

- Heavy duty, 115mm suction pads
- \* Max lifting weights; 155kg horizontal, 140kg vertical
- Suction cups must be kept clean and unmarked to avoid malfunction

**SUC10003**



## 2 Cup Aluminium Body Suction Lifters

- Heavy duty, 115mm suction pads
- \* Max lifting weights; 100kg horizontal, 85kg vertical
- Suction cups must be kept clean and unmarked to avoid malfunction

**SUC10002**



### Xpert Triple Vacuum Suction Lifter

*"Wish I'd bought them years ago, so handy for fitting windows etc. makes life a lot easier."*

*W. Mackenzie*

# Glazing Tools

Must-have tools and accessories to make glass fitting and installation quicker, easier and safer.



## 1 Cup Aluminium Body Suction Lifters

- Heavy duty, 115mm suction pad
- \* Max lifting weights; 50kg horizontal, 35kg vertical
- Suction cup must be kept clean and unmarked to avoid malfunction

**SUC10000**



## 8" Vacuum Glass Lifter

- Max lifting weights; 100kg horizontal, 100kg vertical
- Pump up red line marker
- Complete with carry case
- Suction cup must be kept clean and unmarked to avoid malfunction

**SUC20000**



## Glazing Shovel

- Blade width: 68mm
- ABS plastic
- Ideal for toe and healing when glazing windows
- Available in white - **GLS83000A**

yellow - **GLS830001**

red - **GLS830002**



## 16oz Rubber Mallet

- Cushioned grip handle for extra comfort/safety
- High quality
- 57mm Ø face

**HAM10001**

# Saws

High-quality blades for a quick, clean cut through PVCu or wood glazing and building products.



**Toolbox Saw**

- Hardpoint
- 360mm / 14"
- 16 ppi, fine tooth blade
- Ideal for cutting PVCu, wood or plastic pipe
- Handy ruler printed on top saw edge to make marking up easier

**SAW90004**



**PVCu Saw**

- Hardpoint
- 508mm / 20"
- 14 ppi
- For cutting PVCu, fascia, soffits & trims
- Handy ruler printed on top saw edge to make marking up easier

**SAW40001**



**Builders Saw**

- Hardpoint
- 560mm / 22"
- 8 ppi
- For cutting wood, chipboard, tongue & groove
- Handy ruler printed on top saw edge to make marking up easier

**SAW40002**

# Applicators

Ensures effortless, economic and precise application of sealants and adhesives.



**Professional PU Applicator Gun**

- Stainless steel nozzle
- Full teflon-coated basket and internal parts
- Length: 200mm

**GUN10000**



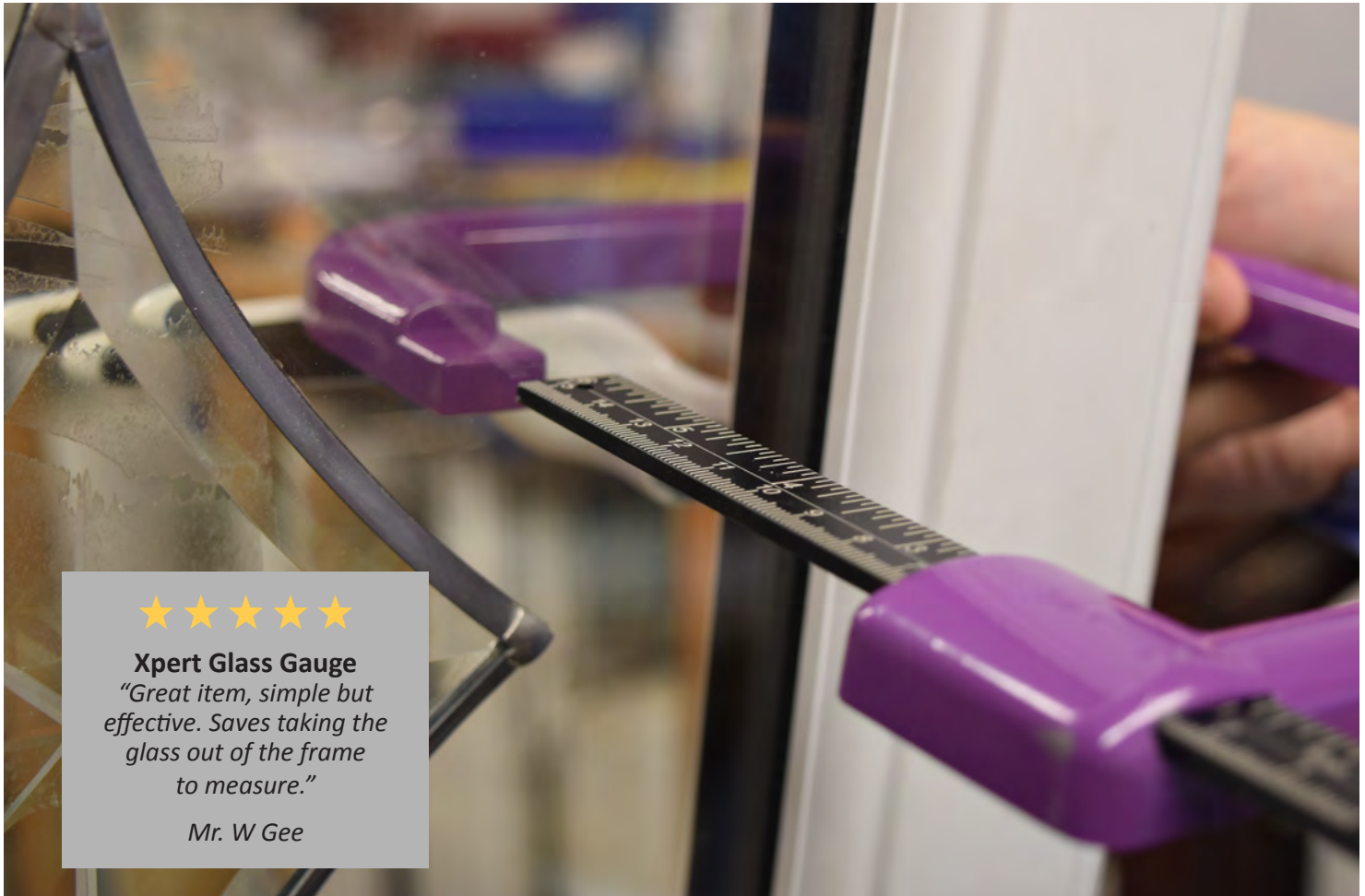
**Heavy Duty Dripless Mastic Gun**

- Dripless automatic pressure release
- Cuts down on waste
- Saves mess
- Revolving barrel
- Will hold up to a 400ml tube

**SIL99990**

# Measuring

Long-lasting quality measurement tools for a faultless finish.



## Xpert Glass Gauge

*"Great item, simple but effective. Saves taking the glass out of the frame to measure."*

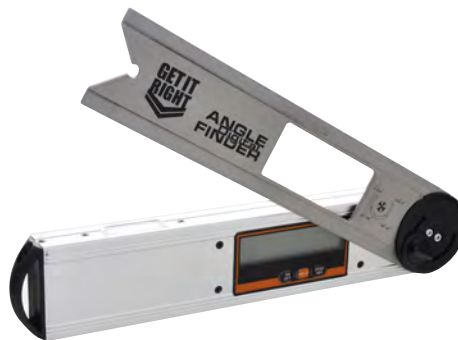
*Mr. W Gee*



## Glass Gauge

- Used to measure the thickness of sealed glass units without removing them from the window
- Robust frame and ruler manufactured from steel
- Jaws open to 104mm for measuring round the widest frames
- Ruler on both sides for easy measuring

**GTG20000**



## Digital Angle Finder

- Length: 320mm
- Measuring range: 0-225°
- Accurate within 0.05°
- Digital display with hold facility
- Battery supplied

**DAF10000**



## Tape Measures

- Matt finish blade reduces glare/reflection for easy reading
- Quick blade hold & break lock
- Belt clip for ease of storage
- Ruler on both sides for easy measuring feet, inches, mm, cm & m
- Double ended hook

5m/16ft **MTP50005**

8m/26ft **MTP50008**

# Air Power Tools

Featuring key air tools in the fabricator's armoury including drills, screwdrivers, sanders and grinders.



## 3/8" Reversible Keyless Chuck Drill

- Speed: 2,000rpm
- Average air flow rate: 4 CFM
- Inlet size: 1/4" BSP
- Chuck size: 10mm
- Sound pressure ISO 15744: 89 dB(A)
- Sound power: 100 dB(A)
- Vibration level ISO 28927:  
A: 3.9 m/s<sup>2</sup>, K: 1.5 m/s<sup>2</sup>

**KAD10000**



## 3/8" Reversible Drill

- Speed: 2,000rpm
- Average air flow rate: 4 CFM
- Inlet size: 1/4" BSP
- Chuck size: 10mm
- Sound pressure ISO 15744: 89 dB(A)
- Sound power: 100 dB(A)
- Vibration level ISO 28927:  
A: 3.9 m/s<sup>2</sup>, K: 1.5 m/s<sup>2</sup>

**KAD10001A**



## 1/4" Reversible Screwdriver Medium Torque

- Speed: 2,000rpm
- Average air flow rate: 4 CFM
- Inlet size: 1/4" BSP
- Sound pressure ISO 15744: 92 dB(A)
- Sound power: 103 dB(A)
- Vibration level ISO 28927:  
A: 0.4 m/s<sup>2</sup>, K: 1.5 m/s<sup>2</sup>

**ARD10000**



## Dentist Drill

- Speed: 22,000rpm
- Average air flow rate: 4 CFM
- Inlet size: 1/4" BSP
- Collet size: 3mm or 6mm
- Sound pressure ISO 15744: 86 dB(A)
- Sound power: 97 dB(A)
- Vibration level ISO 28927:  
A: 1.13 m/s<sup>2</sup>, K: 0.65 m/s<sup>2</sup>

3mm collet **ADD10000**  
6mm collet **ADD10006**



## 3/8" Straight Drill

- Speed: 3,500rpm
- Average air flow rate: 4 CFM
- Inlet size: 1/4" BSP
- Chuck size: 10mm
- Sound pressure ISO 15744: 92 dB(A)
- Sound power: 103 dB(A)
- Vibration level ISO 28927:  
A: 1.13 m/s<sup>2</sup>, K: 1.5 m/s<sup>2</sup>

**KAD10003**



## Professional Orbital Palm Sander

- Speed: 11,000rpm
- Average air flow rate: 4 CFM
- Inlet size: 1/4" BSP
- Pad size: 150mm
- Non vacuum
- Sound pressure ISO 15744: 82 dB(A)
- Sound power: 86 dB(A)
- Vibration level ISO 28927:  
A: 0.1 m/s<sup>2</sup>, K: 1.8 m/s<sup>2</sup>

**ASP10000**

# Air Power Tools

Featuring key air tools in the fabricator's armoury including drills, screwdrivers, sanders and grinders.



## Micro Die Grinder/Pencil Drill

- Speed: 56,000rpm
- Average air flow rate: 7 CFM
- Inlet size: 1/4" BSP
- Collet size: 3mm
- Sound pressure ISO 15744: 74 dB(A)
- Sound power: 85 dB(A)
- Vibration level ISO 28927: A: 0.6 m/s<sup>2</sup>, K: 0.57 m/s<sup>2</sup>

**MGR10000**



# Polishing

Ideal for polishing and finishing PVCu applications.



## Air Sisal Machine

- Speed: 22,000rpm
- Average air flow rate: 4 CFM
- Inlet size: 1/4" BSP
- Sound pressure ISO15744: 86 dB(A)
- Sound power: 97dB(A)
- Vibration level ISO28927:  
A: 1.13 m/s<sup>2</sup>, K: 0.65 m/s<sup>2</sup>
- Complete with sisal mop
- Used to polish plastic
- For best results, use with a cream cleaner (see part: PUC10100 on page 21)

## ASM10000



## Sisal Adaptor

- Converts a male mop to female M10 thread

## ASM20003

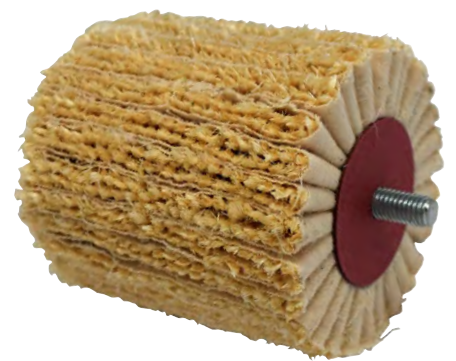


## Female Sisal Mop

- Used to polish plastic
- Use with sisal machine

It is recommended to use with a cream cleaner (see part: PUC10100 on page 21)

## ASM20000



## Male Sisal Mop

- Thread: M8 male
- Used to polish plastic
- Use with sisal machine or a drill

It is recommended to use with a cream cleaner (see part: PUC10100 on page 21)

## ASM20001

# Air Accessories

Everything fabricators need to kit out and maintain their air power tools.



## Hand Router Shoes

Designed for hand routing applications in uPVC Eurogrooves – Ideal for jobs that fall outside of normal machine preps.

- Can be paired with Xpert Dentist drill (see page 10)

Seam Shoe **HRS10000**  
 Drainage Shoe **HRS10001**



## Inline Oiler

- Inlets: 1/4" BSP
- Drip feeds oil to air tools

Recommended for use on all air tools to prolong their life span.

**OIL10000**



## Y Piece Connector

- Inlets: 1/4" BSP

**YPA10000**



## Braided Air Hose - 30m

- Working pressure: 20 Bar
- Inlet: 1/4" BSP
- Heavy duty

**AHC13830**



## Recoil Air Hose

- Inlet: 1/4" BSP
- Length: 7.6m/25ft  
15.0m/50ft

7.6m/25ft **AHC10025**  
 15m/50ft **AHC10050**



## PTFE Tape

- Thread seal tape
- Size: 0.075mm x 12mm x 12mm
- BS7786: 1995 Grade L potable water
- WRAS Approved
- Pack of 10

**TAP10000**

# Thermocouples

Heating sensors for PVCu window and door welding machines

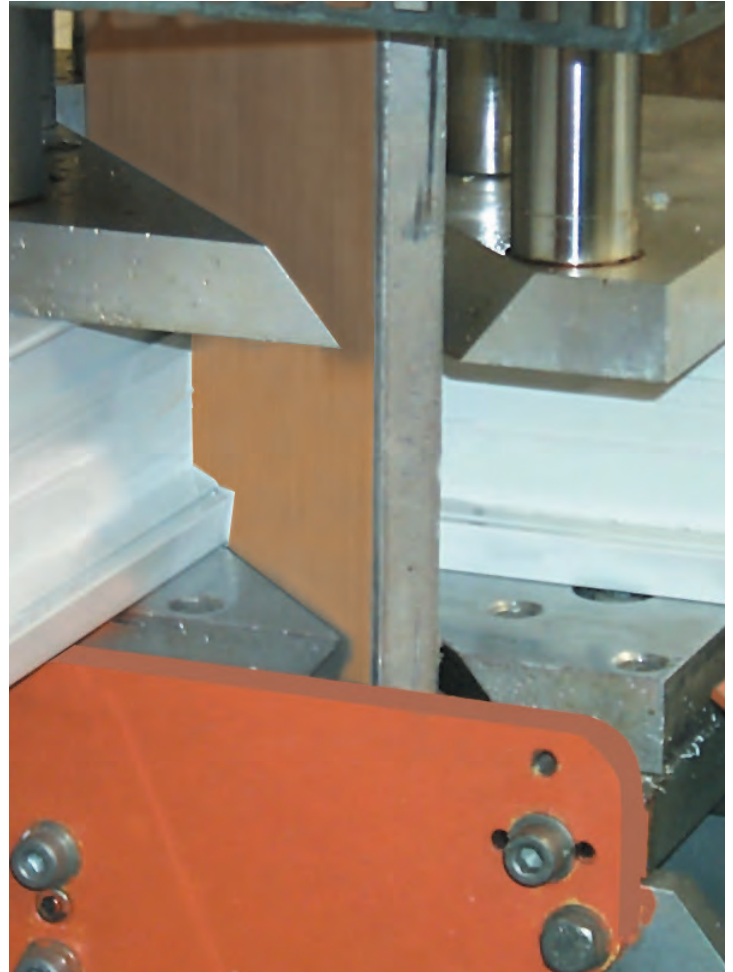


## Probe Thermocouple with Spring Cap

Designed to work with the Urban or Kombimatec uPVC welders. The cap has a male bayonet. Ensures safe and optimum operating temperatures.

- Wire length 1500mm
- Suits Urban & Kombimatec

**THC10000**



## Ring Type Thermocouple

The J type thermocouple ring is ideal for use on Someco, Wegoma or STB uPVC welders.

1000mm wire length **THC21000**  
2000mm wire length **THC22000**



## Short Probe Thermocouple

Designed to work with the Elumatec and Sturtz uPVC welders.

- Wire length 1500mm

**THC30000**

# PTFE Fibreglass Cloth

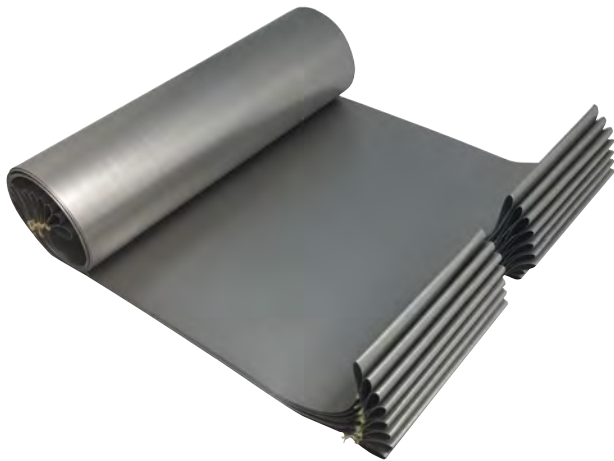
Prevents plastic sticking to weld heads during PVCu window and door fabrication

## PTFE Fibreglass Cloth

This PTFE coated fibreglass cloth offers superior release properties and heat resistance to protect uPVC profiles during welding and ensure they won't stick to welding heads. *Please note, Teflon™ and PTFE are effectively the same product and do the same job. PTFE is the shortened name for polytetrafluoroethylene and Teflon™ is just the widely known trademarked name for the same polymer, which is owned by The Chemours Company.*

- Self-adhesive
- Non-stick and easy clean
- Highly resistant to chemicals except molten alkali metals & fluorine under high temperatures & pressure
- Resistant to temperatures up to 260°C
- Standard width: 1m
- Can be ordered in multiples of 1m or 5m lengths
- Special rates available for a 30m roll

Finish	Part Code	Box Qty.
Brown - Premium	TEF10000	1m <sup>2</sup>
Green	TEF10001	1m <sup>2</sup>
Silver	TEF10002	1m <sup>2</sup>
Red	TEF10003	1m <sup>2</sup>
Brown	TEF10005	5m <sup>2</sup>



## PTFE Sheet Folded & Stitched

- For Urban AKS 1400 and 1410 welder
- Folded and stitched
- Silver version coated
- Red version laminated (3 x life of the silver version)
- Size 584 x 200mm

Finish	Part Code	Size
Silver	TEF30002	584 x 200mm
Red	TEF30003	584 x 200mm



**Physical Properties\*** (\*Please note, these properties are typical values and should not be used for writing specifications.)

Adhesion	45oz/in. width
Break strength	120 lbs/in. width
Elongation	<5 %
Backing thickness	0.152mm
Adhesive thickness	0.05mm
Temperature range	-75 to +260°C
Insulation class	180°C



## PTFE Cloth/Teflon - Non Adhesive, Sleeve

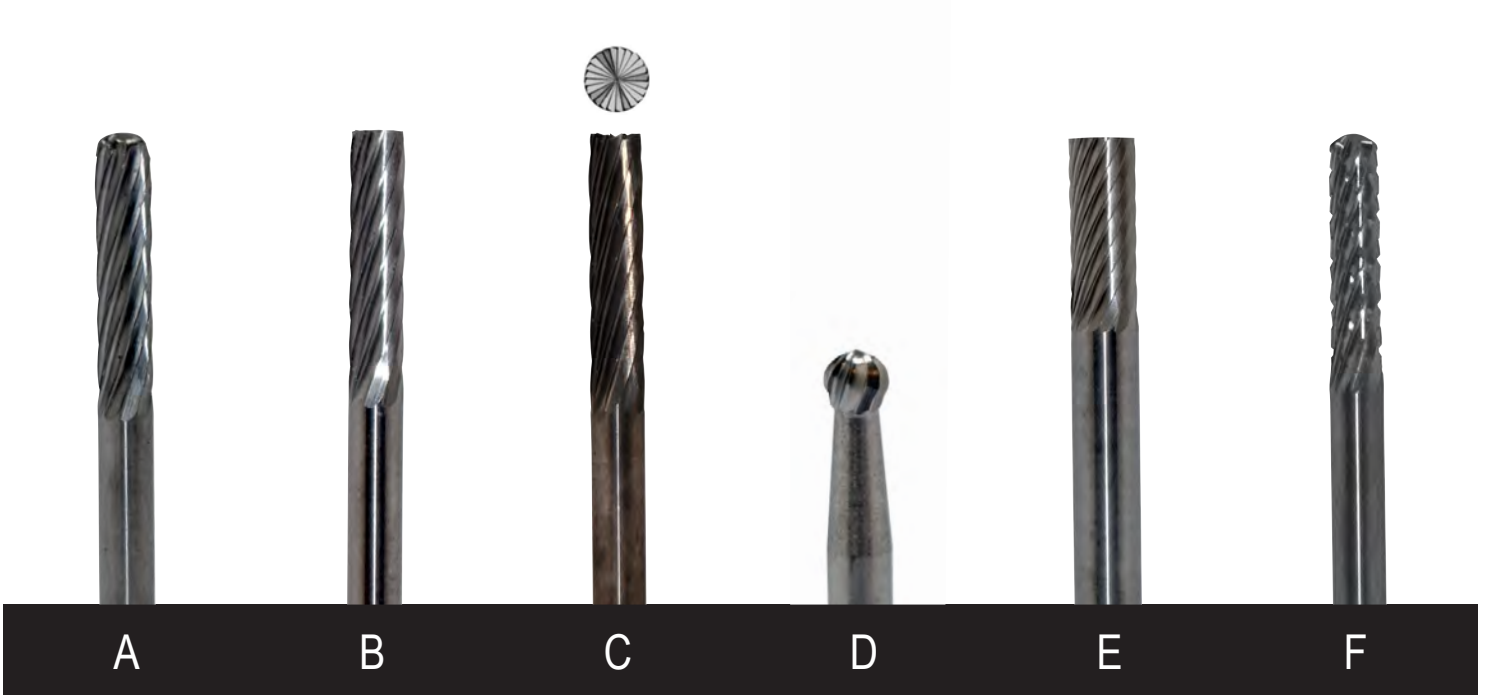
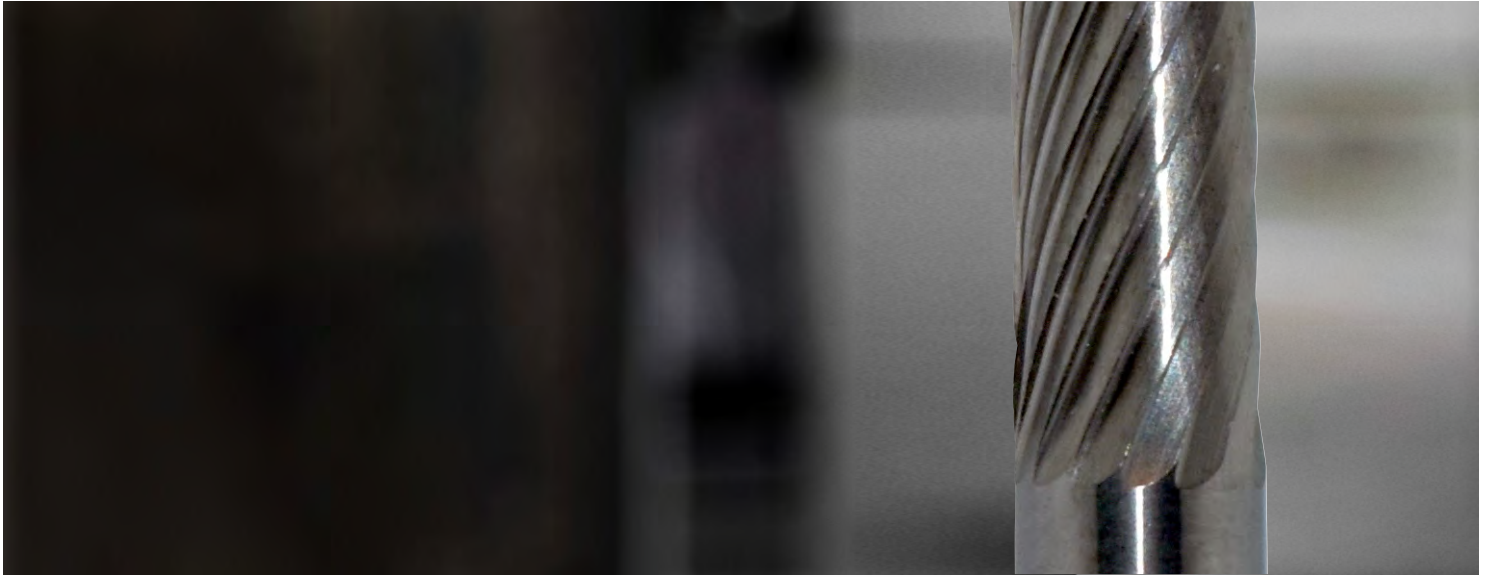
The non adhesive teflon is ideal for use on heater plates to prevent plastic from sticking during window and door fabrication.

- Available as a ROTOX sleeve in brown
- Size 225 x 430mm

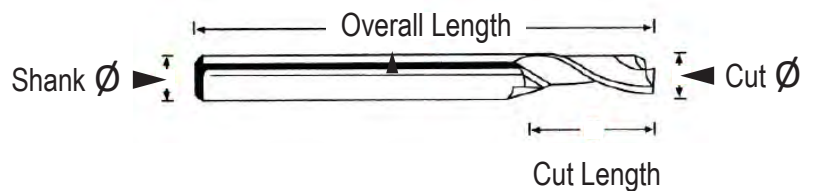
**TEF50000**

# Carbide Burrs

Used with air tools, drills and grinders to cut, shape, grind, file and deburr to perfection.



- Various end types
- Lengths: 28, 38, or 50mm
- Works with micro grinders/pencil or dentist drills
- Med-high quality or high quality



	Quality	Type	Cut $\varnothing$ (mm)	Cut Length (mm)	Overall Length (mm)	Shank $\varnothing$ (mm)	Part Code
A	Medium-High	Ball Nose Cylinder	3	14	38	3	BUR10000
B	Medium-High	Straight End	3	14	28	3	BUR10003
C	Medium-High	Straight with End Cut	3	14	38	3	BUR10004
D	Medium-High	Bull End	3	2.8	38	3	BUR10007
E	High	Straight Cylinder no End Cut	6	16	50	6	BUR10005
F	High	Ball Nose Cylinder	3	14	38	3	BUR20000

# Cutters & Router Bits

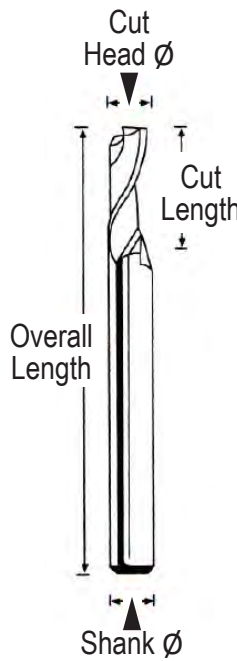
Quality HSS steel parts for precision cutting.



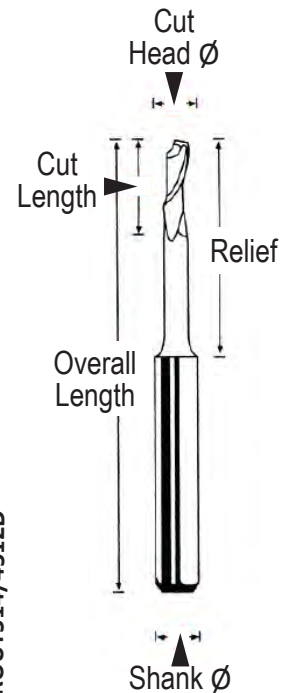
ROT143050    ROT82648    ROT42352



ROUT814NR



ROUT514/4512D



## Rotox Cutters

- High speed steel
- Professionally machined
- Used on hand routers
- Cutter is fixed to machine via an M10 female thread

## Copy Router Bits

- HSS steel
- Professionally machined
- Used in copy routers for lock holes
- Twin flute straights available

## Drain Router Bits

- HSS steel
- Professionally machined
- Used in copy routers for drainage slots

Type	Cut Ø (mm)	Cut Length (mm)	Relief (mm)	Overall Length (mm)	Shank Ø (mm)	Part Code
Rotox Cutter	5	23	-	52	M10 Female Thread	ROT52352
Rotox Cutter	12	23	-	52	M10 Female Thread	ROT122352
Rotox Cutter	16	32	-	50	M10 Female Thread	ROT163250
Copy Router Bit	4	12	-	60	8	ROUT412608
Copy Router Bit	5	12	-	60	8	ROUT51260/80R
Copy Router Bit	5	35	-	80	8	ROUT535NR
Copy Router Bit	5	40	-	100	8	ROUT540100
Copy Router Bit	6	40	-	100	8	ROUT640NR
Copy Router Bit	8	14	-	80	8	ROUT814NR
Copy Router Bit	8	14	-	120	8	ROUT814120NR
Copy Router Bit	8	30	-	100	8	ROUT830NR
Copy Router Bit	8	40	-	120	8	ROUT840120NR
Copy Router Bit	12	14	-	80	8	ROUT1214NR
Drain Router Bit	4	16	45	90	8	ROUT416D
Drain Router Bit	5	18	35	80	8	ROUT518D
Drain Router Bit	5	16	45	90	8	ROUT516D
Drain Router Bit	6	45	45	90	8	ROUT616D
Drain Router Bit	8	14	68	100	8	ROUT814/68D
Drain Router Bit	5	14	45	120	8	ROUT514/4512D

# Machinery Consumables

Machine handles and drill bits in a range of sizes



## Kip Locks

- ABS plastic
- Male or female thread

Size	Part Code
M5 x 50mm	KLH100550
M6 x 63mm	KLH100663
M8 x 63mm	KLH100863
M10 x 63mm	KLH101063
M12 x 63mm	KLH101263
M6 Female	KLH1006F
M8 Female	KLH1008F
M10 Female	KLH10010F
M12 Female	KLH1012F



## Triple Drills

- Set of 3 drill bits (2x10mm RH spiral & 1x12mm LH spiral)
- 8mm plain shank with a flat side for grub screw fixing
- Cut length: 70mm
- Overall length: 100mm

**TDS10001**



## Triple Drills

- HSS drill bits
- M10 male thread
- Used on copy router for handle holes
- Lengths cut: 50mm, overall: 87mm

Size	Left Hand	Right Hand
10mm	TDS10003	TDS10000
12mm	TDS10005	TDS10004
10mm Pilot	TDS10007	TDS10006
12mm Pilot	TDS10009	TDS10008



## SDS Drill Bits

- Tungsten carbide tip
- Double flute
- For concrete, masonry, light blocks and stone

Size (mm)	Part Code
6.0 x 210	SDX60210
6.0 x 260	SDX60260
6.5 x 210	SDX65210
6.5 x 260	SDX65260



## Magnetic Bit Holder

- Holder length: 60mm
- 1/4" hex shank

**SDB90000**

# HSS Drill Bits - Standard & Long Length

Quickly and cleanly cut through non-ferrous metals, plastic, wood and more

- Drill tip: 135°
- Fully ground Titanium Nitride (TiN) coating standard - DIN338, long - DIN340
- High quality
- For drilling into; steel, iron, copper, nickel, zinc, sheet metal, aluminium & PVCu

Drill Ø (mm)	Hole Size	Cut Length (mm)	Overall Length (mm)	Part Code
Standard Length HSS Drill Bits - DIN338 fully ground				
2.0	M2.5	24	49	XDB2020049
2.5	M3	30	57	XDB2025057
3.0	M3.5	33	61	XDB2030061
3.5	M4	39	70	XDB2035070
4.0	M5	43	75	XDB2040075
4.5	M5	47	80	XDB2045080
5.0	M6	42	86	XDB2050086
6.0	M7	57	93	XDB2060093
7.0	M8	69	109	XDB2070109
8.0	M9	75	117	XDB2080117
10.0	M11	87	133	XDB2100133
Long Length HSS Drill Bits - DIN340 fully ground				
3.0	M3.5	66	100	XDB1030100
3.5	M4	73	112	XDB1035112
4.0	M5	78	119	XDB1040119
4.5	M5	82	126	XDB1045126
5.0	M6	87	132	XDB1050132
5.5	M6	91	139	XDB1055139
6.0	M7	91	139	XDB1060139
6.5	M7	97	148	XDB1065148
8.0	M9	109	165	XDB1080165
10.0	M11	121	184	XDB1100184



≤ø2.0mm	3980	4780	7170	3980	12740	3990
ø2.1-4mm	1990	2390	3590	1990	6370	1990
ø4.1-6mm	1330	1590	2390	1330	4250	1330
ø6.1-8mm	1000	1190	1790	1000	3190	1000
ø8.1-10mm	900	960	1430	900	2650	900
ø10.1-12mm	660	900	1190	660	2120	660
ø12.1-13mm	570	680	1020	570	1820	570

# 117 LMN Silicone

Perimeter sealing of windows & door frames.

With its excellent adhesion to virtually all construction materials, easy application and permanent elasticity with movement amplitude of up to 20%, Xpert 117 LMN silicone is ideally suited to sealing all kinds of building joints and edges inside and out, especially around door and window frames.

- 1-component neutral silicone sealant
- Very easy to apply with the Xpert heavy duty Dripless Mastic gun
- Excellent adhesion to almost all building materials (see technical datasheet online)
- Permanent elasticity
- For outdoor and indoor applications
- High resistance to ageing, weathering and UV
- Temperature resistance: -50°C - +150°C
- Skin formation time: 15 mins at 23°C and 50% relative humidity
- Curing rate: 2.5 – 3mm after 24h at 23°C and 50% relative humidity
- MEKO-free - contains no Methyl Ethyl Ketoxime (MEKO) which is considered hazardous. This makes it odourless and safer for you and your customers.
- Available in Snow White, Brown RAL 8017, Black RAL 9005, Clear and Anthracite Grey RAL 7016



Colour	RAL	Size	Part Code	Box Qty.
Snow White	-	280ml	SIL20000	12
Clear	-	280ml	SIL20006	12
<b>Brown</b>	RAL8017	280ml	SIL20002	12
<b>Black</b>	RAL9005	280ml	SIL20005	12
<b>Anthracite Grey</b>	RAL7016	280ml	SIL20007	12

Scan the QR code for our Technical Data Sheet



# Consumables

Takes care of all those essential clean up jobs, quick fixes and final flourishes.



## Super Glue

- Achieves fast bonding of most non-porous surfaces
- High bond strength
- Available in low, medium or high viscosity

	20gm Bottle	50gm Bottle
LV	<b>GLU20202B</b>	-
MV	<b>GLU20201B</b>	<b>GLU20501B</b>
HV	<b>GLU20203</b>	-



## Super Glue Activator

- Solvent-based super glue activator
- Works with Xpert super glue to accelerate adhesion
- Reduces bloom and odour
- Non-yellowing formulation
- 200ml aerosol spray can

**GLU72204**



## PVCu Cream Cleaner

- Heavy-duty cleaner removes dirt and grime on PVCu plastic materials
- Suitable for both domestic and industrial usage
- Apply with a cloth or sisal mop (see page 12)
- 1 litre bottle

**PUC10100**



## PVCu Solvent Cleaner

- Powerful solvent-based cleaner removes even ingrained dirt
- Suitable for use on all PVCu-based plastics
- Non-smear
- Fast acting
- 1 litre bottle

**SOL10100**



## Glass Cleaner

- Easy-to-use window cleaner
- Fast-acting, non-smear
- Available in 1L spray or 5L and 25L refills

1 litre spray	<b>PGC10100</b>
5 litre refill	<b>PGC10500</b>
25 litre refill	<b>PGC12500</b>

# Xpert Credentials

Why Xpert tools are always right for the job...

**ESSENTIAL** - We've listened to what the market wants and responded with a range of carefully selected, tried-and-tested tools and equipment to fulfil every glazing and fenestration application.

**RELEVANT** - Our tools and accessories are designed by people in the trade. Their hands-on knowledge about which tools work and how they're used has gone straight into product development to turn out practical, just-the-job kit with some clever features that enhance usability and give great results.

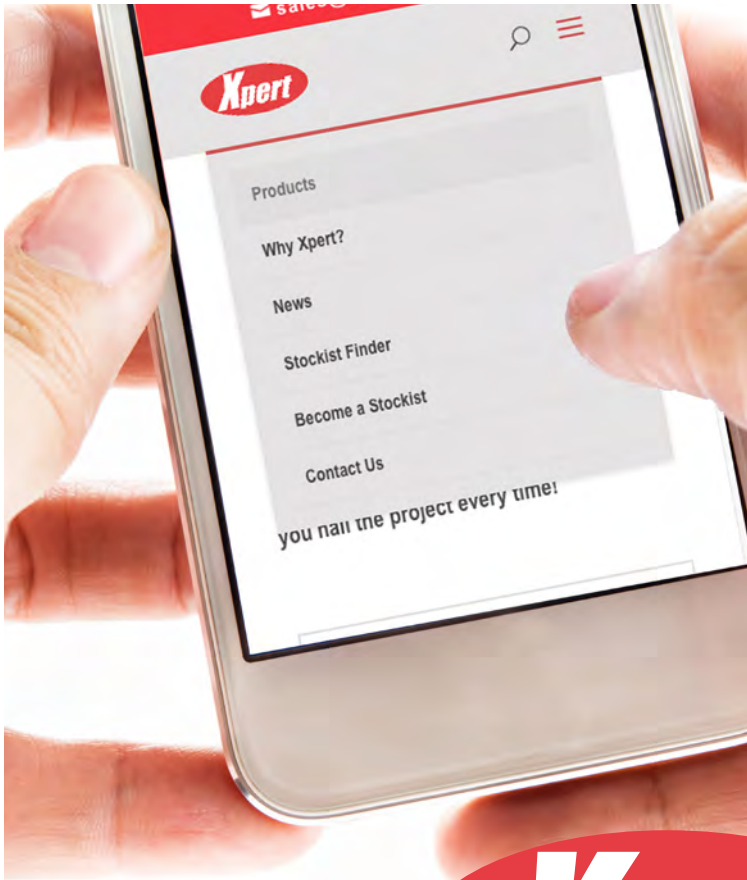
**EXCELLENCE** - Out of the tens of thousands of Xpert products sold last year, we received just a handful of returns. That proves our products hit the spot with fitters and fabricators in terms of features, quality and durability.

**RELIABLE** - Xpert offers a 1-year warranty across the entire product range except for air tools which come with a 3-month warranty. All warranty claims need to be returned to us along with a returns number for examination. Please note, air tools need to be oiled daily. Failure to do this will invalidate your warranty.

**RIGHT-PRICED** – We work hard to ensure our products achieve the ideal balance of price and performance to offer customers cracking value for money and give premium brands a run for their money!

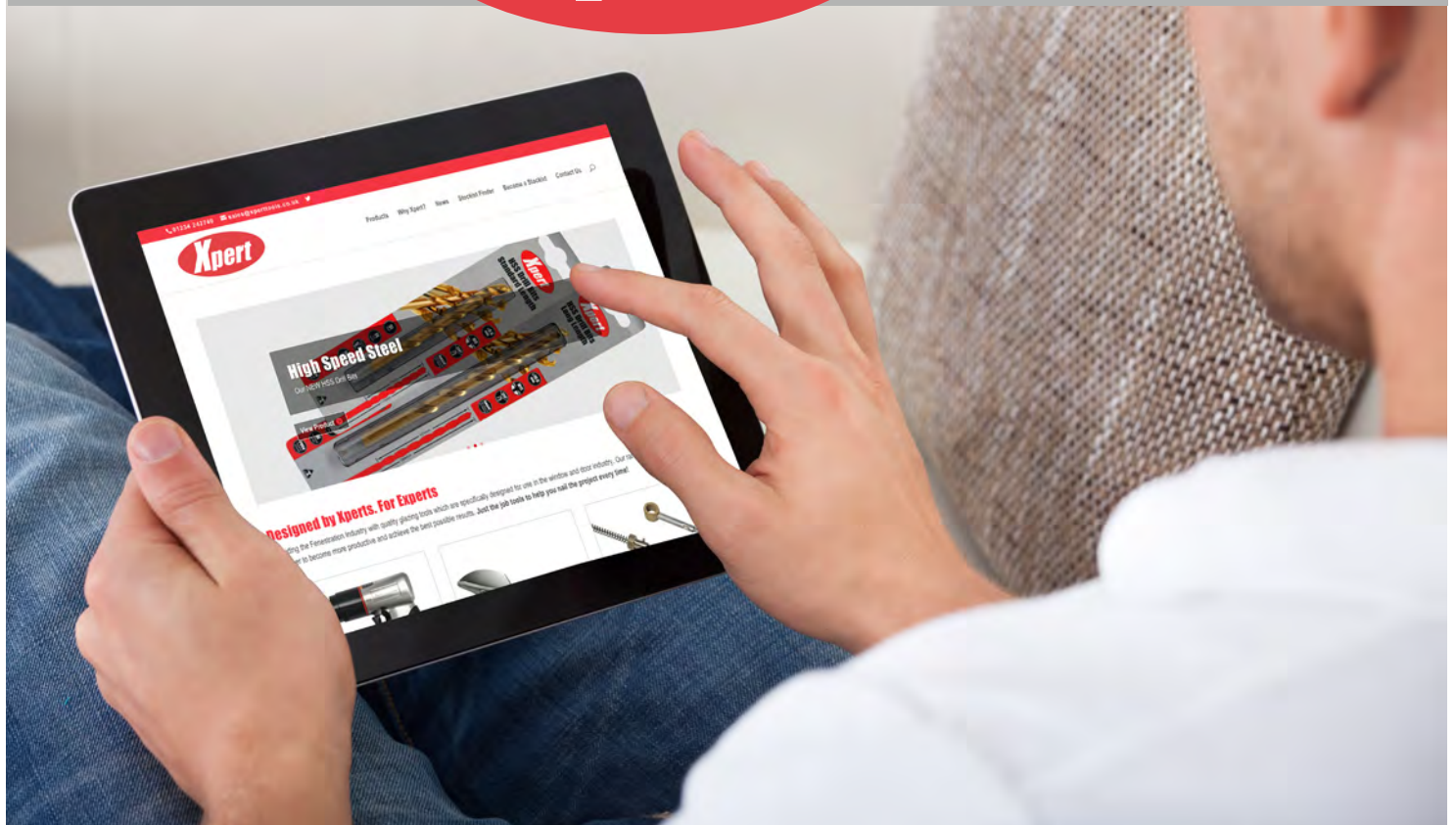
# All things Xpert tools on tap!

Visit [www.xperttools.co.uk](http://www.xperttools.co.uk) to...



- ✓ Find comprehensive product information for the entire range
- ✓ Read up-to-the-minute news, top tips & announcements
- ✓ Find out about the warranty offered on all Xpert tools
- ✓ Download the latest Xpert tools literature
- ✓ Stay informed by subscribing to our mailing list
- ✓ Locate your nearest Xpert tools stockist
- ✓ Discover how to become a stockist
- ✓ Get in touch with us

[www.xperttools.co.uk](http://www.xperttools.co.uk)





**[www.xperttools.co.uk](http://www.xperttools.co.uk)**

**Your nearest stockist of Xpert products :**