



**DESIGNED BY XPERTS.
FOR EXPERTS.**



Tools & Consumables V5



In 2010, a team of experienced, professional window fitters realised that many of the tools used within the glazing industry were not actually intended for that purpose. To address this gap in the market, the Xpert brand was born, giving fenestration professionals a range of tried-and-tested tools, hardware and equipment essentials they can rely on every day.

Our products help fabricators and fitters achieve the best results in less time because they've been designed with inside, hands-on knowledge of how they are really used in the workplace – that includes the bad habits! The result is practical, proven kit preferred by trade professionals because it eliminates many of the irritations associated with employing general-purpose tools and consistently delivers the desired results.



Xpert Mitre Shears

“These shears are great for cutting rubber gaskets but also for cutting trims for windows and doors. They are very well made as I use them probably every day and they are still sharp and working fine.”

Jack Warner

Gasket Shears & Snips

Easily cut through trims and gaskets again and again with these hard-wearing fitter’s toolbox essentials.



Mitre / Gasket / Trim Shear

- Multi angled base: 45-90°
- Cushioned grip handles for extra comfort/safety
- High quality

GKT03104



Universal Mitre / Gasket / Trim Shear

- Multi angled base: 45-90°
- Accepts trim and utility blades
- Cushioned grip handles for extra comfort/safety

GKT03804



Gasket Snips

- Length: 140mm
- For cutting gasket and tin

GKT20000

Knives & Blades

Specialist cutting tools and spares tough enough to tackle all kinds of glazing jobs.



32mm Chisel Knife / Bead Knife

- 32mm stiff polished chrome chisel blade
- Ideal for removing window beads
- Cushioned grip handle with steel end cap

KNF10001



10 in 1 Multi-Purpose Knife

- 75mm stiff polished chrome blade
- Ideal for removing window beads
- Cushioned grip handle with steel end cap
- Multi functions include: nail puller, knife, bottle opener, scraper etc.

KNF10002



Heavy Duty Knife

- Zinc alloy case with TPR handle
- Quick blade changing and 3-stage blade locking
- Internal blade storage

KNF10000



Utility Knife Blades

- Heavy duty blades
- 0.06mm thickness

10 pack - **BLDCT09**
100 pack - **BLDCT10**



Spare Base Plate for Mitre Shears

- Replacement base plate for - GKT03104 Xpert mitre/gasket/trim shears and GKT03804 Xpert universal mitre/gasket/trim shears

GKT03106

Scan the code for our installation guide



Replacement SK5 Blade

- Replacement blade for GKT03104 Xpert mitre/gasket/trim shears

GKT03105

Scan the code for our installation guide



Knives & Guides

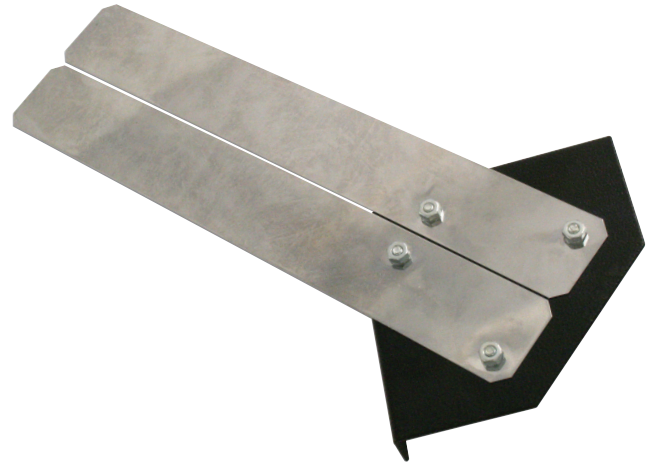
Specialist cutting tools and spares tough enough to tackle all kinds of glazing jobs.



Moon / Sprue Knife

- Sharp stainless steel blade
- Non-slip cushioned handle for comfort/safety
- Ideal for removing sprues on PVCu windows or as a general purpose knife

DCK10000



Sprue Guide

- 0.4mm sprue guide allows fast and accurate removal of the weld sprue on PVCu welded profiles when used with the industry standard moon knife

SPRUEGUIDE



Xpert Chisel Knife

"...this was by far the best tool for the job. It's also very sturdy and I'm sure it will last a long time."

David Torbett

Glazing Tools

Must-have tools and accessories to make glass fitting and installation quicker, easier and safer.



3 Cup Aluminium Body Suction Lifters

- Heavy duty, 115mm suction pad
- * Max lifting weights; 155kg horizontal, 140kg vertical
- Suction cups must be kept clean and unmarked to avoid malfunction

SUC10003



2 Cup Aluminium Body Suction Lifters

- Heavy duty, 115mm suction pad
- * Max lifting weights; 100kg horizontal, 85kg vertical
- Suction cups must be kept clean and unmarked to avoid malfunction

SUC10002



Xpert Triple Vacuum Suction Lifter

"Wish I'd bought them years ago, so handy for fitting windows etc. makes life a lot easier."

W. Mackenzie

Glazing Tools

Must-have tools and accessories to make glass fitting and installation quicker, easier and safer.



1 Cup Aluminium Body Suction Lifters

- Heavy duty, 115mm suction pad
- * Max lifting weights; 50kg horizontal, 35kg vertical
- Suction cups must be kept clean and unmarked to avoid malfunction

SUC10000



8" Vacuum Glass Lifter

- Max lifting weights; 100kg horizontal, 100kg vertical
- Pump up red line marker
- Complete with carry case
- Suction cups must be kept clean and unmarked to avoid malfunction

SUC20000



Glazing Shovel

- Blade width: 68mm
- ABS Plastic
- Ideal for toe and healing when glazing windows
- Available in white - **GLS83000A**

yellow - **GLS830001**

red - **GLS830002**



16oz Rubber Mallet

- Cushioned grip handle for extra comfort/safety
- High quality
- 57mm Ø face

HAM10001

Saws

High-quality blades for a quick, clean cut through PVCu or wood glazing and building products.



Toolbox Saw

- Hardpoint
- 360mm / 14"
- 16 ppi, fine tooth blade
- Ideal for cutting PVCu, wood or plastic pipe
- Handy ruler printed on top saw edge to make marking up easier

SAW90004



PVCu Saw

- Hardpoint
- 508mm / 20"
- 14 ppi
- For cutting PVCu, fascia, soffits & trims
- Handy ruler printed on top saw edge to make marking up easier

SAW40001



Builders Saw

- Hardpoint
- 560mm / 22"
- 8 ppi
- For cutting wood, chipboard, tongue & groove
- Handy ruler printed on top saw edge to make marking up easier

SAW40002

Applicators

Ensures effortless, economic and precise application of sealants and adhesives.



Professional PU Applicator Gun

- Stainless steel nozzle
- Full teflon-coated basket and internal parts
- Length: 200mm

GUN10000



Heavy Duty Dripleless Mastic Gun

- Dripleless feature
- Cuts down on waste
- Saves mess
- Revolving barrel
- Will hold up to a 400ml tube

SIL99990

Measuring

Long-lasting quality measurement tools for a faultless finish.



Xpert Glass Gauge

"Great item, simple but effective. Saves taking the glass out of the frame to measure."

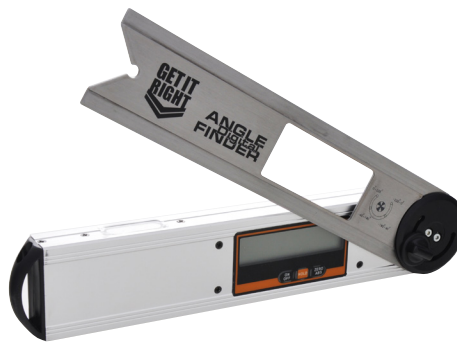
Mr. W Gee



Glass Gauge

- Used to measure the thickness of sealed glass units without removing them from the window
- Robust frame and ruler manufactured from steel
- Jaws open to 104mm for measuring round the widest frames
- Ruler on both sides for easy measuring

GTG20000



Digital Angle Finder

- Length: 320mm
- Measuring range: 0-225°
- Accurate within 0.05°
- Digital display with hold facility

DAF10000



Tape Measures

- Matt finish blade reduces glare/reflection for easy reading
- Quick blade hold & break lock
- Belt clip for ease of storage
- Ruler on both sides for easy measuring feet, inches, mm, cm & m
- Double ended hook

5m/16ft **MTP50005**
8m/26ft **MTP50008**

Air Power Tools

Featuring key air tools in the fabricator's armoury including drills, screwdrivers, sanders and grinders.



3/8 Reversible Keyless Chuck Drill

- Speed: 2,000rpm
- Av CFM: 4
- Inlet: 1/4 BSP
- Chuck size: 10mm
- 89 sound pressure ISO15744
- 100dB sound power
- Vibration level ISO28927 (m/s²)
a: 3.9, K: 1.5

KAD10000



3/8 Reversible Drill

- Speed: 2,000rpm
- Av CFM: 4
- Inlet: 1/4 BSP
- Chuck size: 10mm
- 89 sound pressure ISO15744
- 100dB sound power
- Vibration level ISO28927 (m/s²)
a: 3.9, K: 1.5

KAD10001A



1/4 Reversible Screwdriver Medium Torque

- Speed: 2,000rpm
- Av CFM: 4
- Inlet: 1/4 BSP
- 92 sound pressure ISO15744
- 103dB sound power
- Vibration level ISO28927 (m/s²)
a: 0.4, K: 1.5

ARD10000



Mini Dentist Drill

- Speed: 22,000rpm
- Av CFM: 4
- Inlet: 1/4 BSP
- Collet size: 3mm
- 86 sound pressure ISO15744
- 97dB sound power
- Vibration level ISO28927 (m/s²)
a: 1.13, K: 0.65

ADD10000



3/8 Straight Drill

- Speed: 3,500rpm
- Av CFM: 4
- Inlet: 1/4 BSP
- Chuck size: 10mm
- 92 sound pressure ISO15744
- 103dB sound power
- Vibration level ISO28927 (m/s²)
a: 1.13, K: 1.5

KAD10003



Professional Orbital Palm Sander

- Speed: 11,000rpm
- Av CFM: 4
- Inlet: 1/4 BSP
- Pad size: 150mm
- Non Vacuum
- 82 sound pressure ISO15744
- 86dB sound power
- Vibration level ISO28927 (m/s²)
a: 0.1, K: 1.8

ASP10000

Air Power Tools

Featuring key air tools in the fabricator's armoury including drills, screwdrivers, sanders and grinders.



Micro Die Grinder/Pencil Drill

- Speed: 56,000rpm
- Av CFM: 3
- Inlet: 1/4 BSP
- Collet size: 3mm
- TBC sound pressure ISO15744
- TBDdB sound power
- Vibration level ISO28927 (m/s²) a: TBC, K: TBC

MGR10000



Keyless Chuck

- Capacity: 10mm

CKK10001



Polishing

Ideal for polishing and finishing PVCu applications.



Air Sisal Machine

- Speed: 22,000rpm
- Av CFM: 4
- Inlet: ¼ BSP
- 86 sound pressure ISO15744
- 97dB sound power
- Vibration level ISO28927 (m/s²)
a: 1.13, K: 0.65
- Complete with sisal mop
- Used to polish plastic
- For best results when used with a cream cleaner

ASM10000



Sisal Adaptor

- Converts a male mop to female M10 thread

ASM20003



Female Sisal Mop

- Used to polish plastic
- Use with sisal machine

It is recommended to use with a cream cleaner

ASM20000



Male Sisal Mop

- Thread: M8 Male
- Used to polish plastic
- Use with sisal machine or a drill

It is recommended to use with a cream cleaner

ASM20001

Air Accessories

Everything fabricators need to kit out and maintain their air power tools.



Hand Router Shoes

Seam Shoe **HRS10000**
Drainage Shoe **HRS10001**



Inline Oiler

- Inlets: ¼ BSP
- Drip feeds oil to air tools

Recommended for use on all air tools to prolong their life span.

OIL10000



Y Piece

- Inlets: ¼ BSP

YPA10000



Braided Air Hose - 30m

- Working pressure: 20 Bar
- Inlet: ¼ BSP
- Heavy duty

AHC13830



Recoil Air Hose

- Inlet: ¼ BSP
- 7.6m/25ft

AHC10025



PTFE Tape

- Thread seal tape
- Size: 0.075mm x 12mm x 12m
 - BS7786: 1995 Grade L potable water
 - WRAS Approved

TAP10000

Thermocouples

Heating sensors for PVCu window and door welding machines



Probe Thermocouple with Spring Cap

Designed to work with the Urban or Kombimatec uPVC welders. The cap has a male bayonet. The coupling probes connect to heat for the welding of windows.

- 1.5m
- Suits Urban & Kombimatec

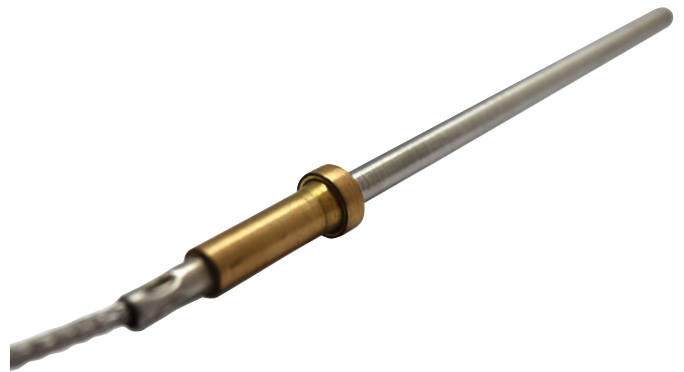
THC10000



Ring Type Thermocouple

The j type thermocouple ring is ideal for use on Someco, Wegoma or STB uPVC welders.

1000mm **THC21000**
2000mm **THC22000**



Short Probe Thermocouple

Designed to work with the Elumated/Sturtz branded machinery. The coupling probes connect to heat for the welding of windows

- 1.5m

THC30000

Teflon ET 22553 PTFE Coated Glass Tape

- Self-adhesive & non adhesive
- Easy to apply
- Burn-resistant
- Does not stick to weld material
- Available in 1m multiples
- Special rates available for a 30 metre roll

Technical Specification

ET 22553 is manufactured from a 6 thou or 0.152mm standard grade PTFE impregnated fibreglass with 0.05mm of high temperature silicone pressure sensitive adhesive. This product is almost chemically inert. Only molten alkali metals and fluorine under elevated temperatures and pressure will attack the PTFE surface. The fibreglass provides dimensional stability

and restricts PTFE cold flow. The PTFE surface provides a quick-release surface ideal for PVC-u weld heads.

Physical Properties (Physical properties are typical values and should not be used for writing specifications)

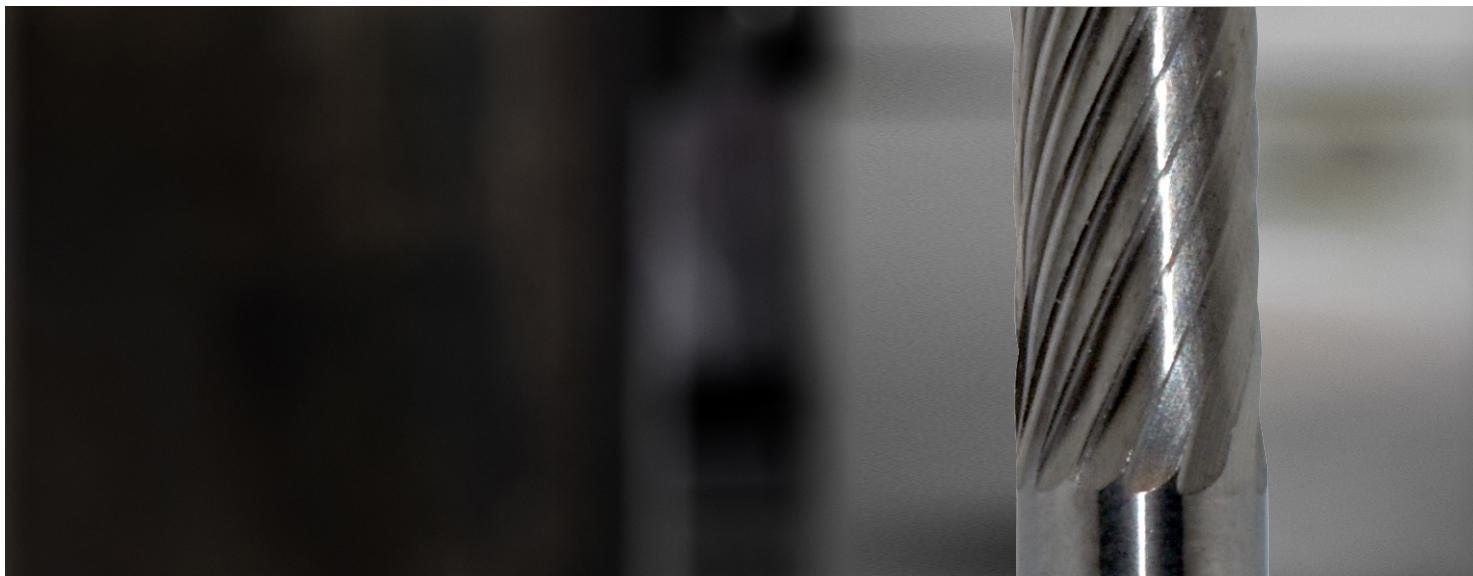
| | |
|--------------------|-------------------|
| Adhesion | 45oz/in. width |
| Break strength | 120 lbs/in. width |
| Elongation | <5 % |
| Backing thickness | 0.152mm |
| Adhesive thickness | 0.05mm |
| Temperature range | -75 to +260°C |
| Insulation class | 180°C |

| Finish | Type | Part Code | Box Qty. |
|--------|-----------------------|-----------|-----------------|
| Brown | Premium Self Adhesive | TEF10000 | 1m ² |
| Green | Self Adhesive | TEF10001 | 1m ² |
| Red | Self Adhesive | TEF10003 | 1m ² |
| Silver | Self Adhesive | TEF10002 | 1m ² |
| Brown | Non Adhesive | TEF20000 | 1m ² |
| Green | Non Adhesive | TEF20001 | 1m ² |

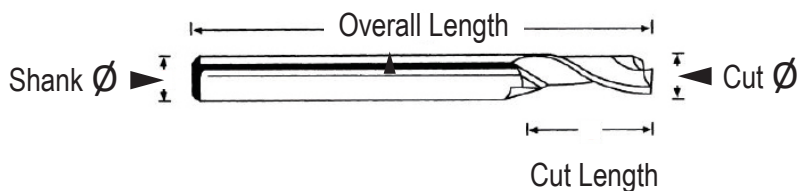


Carbide Burrs

Used with air tools, drills and grinders to cut, shape, grind, file and deburr to perfection.



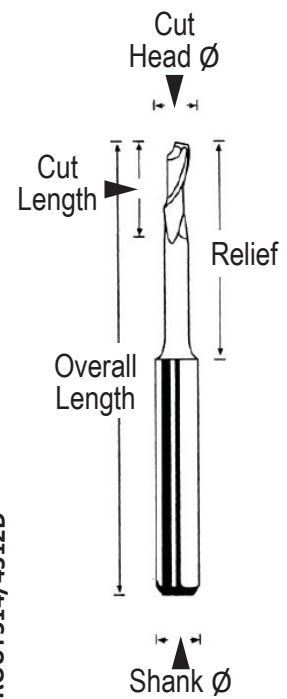
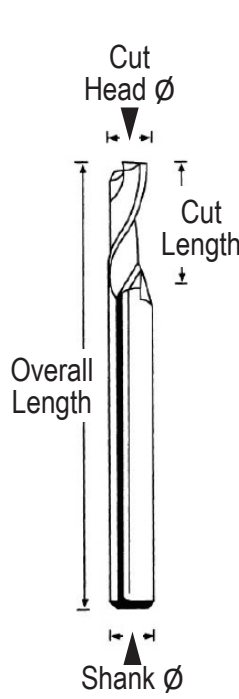
- Various types; 28, 38, or 50mm long
- Works with micro grinders/pencil or dentist drills
- Med-high quality or High Quality



| | Quality | Type | Cut Ø (mm) | Cut Length (mm) | Overall Length (mm) | Shank Ø (mm) | Part Code |
|---|-------------|------------------------------|------------|-----------------|---------------------|--------------|-----------|
| A | Medium-High | Ball Nose Cylinder | 3 | 14 | 38 | 3 | BUR10000 |
| B | Medium-High | Pointed | 3 | 12 | 38 | 3 | BUR10002 |
| C | Medium-High | Straight End | 3 | 14 | 28 | 3 | BUR10003 |
| D | Medium-High | Straight with End Cut | 3 | 14 | 38 | 3 | BUR10004 |
| E | Medium-High | Bull End | 3 | 2.8 | 38 | 3 | BUR10007 |
| F | High | Straight Cylinder no End Cut | 6 | 16 | 50 | 6 | BUR10005 |
| G | High | Ball Nose Cylinder | 3 | 14 | 38 | 3 | BUR20000 |

Cutters & Router Bits

Quality HSS steel parts for precision cutting.



Rotox Cutters

- High speed steel
- Professionally machined
- Used on hand routers
- Cutter is fixed to machine via an M10 female thread

Copy Router Bits

- HSS steel
- Professionally machined
- Used in copy routers for lock holes
- Twin flute straights available

Drain Router Bits

- HSS steel
- Professionally machined
- Used in copy routers for drainage slots

| Type | Cut Ø (mm) | Cut Length (mm) | Relief (mm) | Overall Length (mm) | Shank Ø (mm) | Part Code |
|------------------|------------|-----------------|-------------|---------------------|-------------------|---------------|
| Rotox Cutter | 5 | 23 | - | 52 | M10 Female Thread | ROT52352 |
| Rotox Cutter | 12 | 23 | - | 52 | M10 Female Thread | ROT122352 |
| Rotox Cutter | 16 | 32 | - | 50 | M10 Female Thread | ROT163250 |
| Copy Router Bit | 4 | 12 | - | 60 | 8 | ROUT412608 |
| Copy Router Bit | 5 | 12 | - | 60 | 8 | ROUT51260/80R |
| Copy Router Bit | 5 | 35 | - | 80 | 8 | ROUT535NR |
| Copy Router Bit | 5 | 40 | - | 100 | 8 | ROUT540100 |
| Copy Router Bit | 6 | 40 | - | 100 | 8 | ROUT640NR |
| Copy Router Bit | 8 | 14 | - | 80 | 8 | ROUT814NR |
| Copy Router Bit | 8 | 14 | - | 120 | 8 | ROUT814120NR |
| Copy Router Bit | 8 | 30 | - | 100 | 8 | ROUT830NR |
| Copy Router Bit | 8 | 40 | - | 120 | 8 | ROUT840120NR |
| Copy Router Bit | 12 | 14 | - | 80 | 8 | ROUT1214NR |
| Drain Router Bit | 4 | 16 | 45 | 90 | 8 | ROUT416D |
| Drain Router Bit | 5 | 18 | 35 | 80 | 8 | ROUT518D |
| Drain Router Bit | 5 | 16 | 45 | 90 | 8 | ROUT516D |
| Drain Router Bit | 6 | 45 | 45 | 90 | 8 | ROUT616D |
| Drain Router Bit | 8 | 14 | 68 | 100 | 8 | ROUT814/68D |
| Drain Router Bit | 5 | 14 | 45 | 120 | 8 | ROUT514/4512D |

Machinery Consumables

Machine handles and drill bits in a range of sizes



Kip Locks

- ABS plastic
- Male or female thread

| Size | Part Code |
|------------|-----------|
| M5 x 50 | KLH100550 |
| M6 x 63 | KLH100663 |
| M8 x 63 | KLH100863 |
| M10 x 63 | KLH101063 |
| M12 x 63 | KLH101263 |
| M6 Female | KLH1006F |
| M8 Female | KLH1008F |
| M10 Female | KLH10010F |
| M12 Female | KLH1012F |



Triple Drills

- Set of 3 drill bits (2x10mm & 1x12mm)
- 8mm plain shank with a flat side for grub screw fixing

TDS10001



Triple Drills

- HSS drill bits
- M10 male thread
- Used on copy router for handle holes

| Size | Left Hand | Right Hand |
|------------|-----------|------------|
| 10mm | TDS10003 | TDS10000 |
| 12mm | TDS10005 | TDS10004 |
| 10mm Pilot | TDS10007 | TDS10006 |
| 12mm Pilot | TDS10009 | TDS10008 |



SDS Drill Bits

- Tungsten carbide tip
- Double flute
- For concrete, masonry, light blocks and stone

Magnetic Tip Holder

- Holder length: 60mm
- 1/4 inch hex shank

| Size (mm) | Part Code |
|-----------|-----------|
| 6.0 x 210 | SDX60210 |
| 6.0 x 260 | SDX60260 |
| 6.5 x 210 | SDX65210 |
| 6.5 x 260 | SDX65260 |

SDB90000

HSS Drill Bits - Standard & Long Length

Quickly and cleanly cut through non-ferrous metals, plastic, wood and more

- Drill tip: 135°
- Fully ground Titanium Nitride (TiN) coating standard - DIN338, long - DIN340
- High quality
- For drilling into; steel, iron, copper, nickel, zinc, sheet metal, aluminium & PVCu

| Drill Ø (mm) | Hole Size | Cut Length (mm) | Overall Length (mm) | Part Code |
|--|-----------|-----------------|---------------------|------------|
| Standard Length HSS Drill Bits - DIN338 fully ground | | | | |
| 2.0 | M2.5 | 24 | 49 | XDB2020049 |
| 2.5 | M3 | 30 | 57 | XDB2025057 |
| 3.0 | M3.5 | 33 | 61 | XDB2030061 |
| 3.5 | M4 | 39 | 70 | XDB2035070 |
| 4.0 | M5 | 43 | 75 | XDB2040075 |
| 4.5 | M5 | 47 | 80 | XDB2045080 |
| 5.0 | M6 | 42 | 86 | XDB2050086 |
| 6.0 | M7 | 57 | 93 | XDB2060093 |
| 7.0 | M8 | 69 | 109 | XDB2070109 |
| 8.0 | M9 | 75 | 117 | XDB2080117 |
| 10.0 | M11 | 87 | 133 | XDB2100133 |
| Long Length HSS Drill Bits - DIN340 fully ground | | | | |
| 3.0 | M3.5 | 66 | 100 | XDB1030100 |
| 3.5 | M4 | 73 | 112 | XDB1035112 |
| 4.0 | M5 | 78 | 119 | XDB1040119 |
| 4.5 | M5 | 82 | 126 | XDB1045126 |
| 5.0 | M6 | 87 | 132 | XDB1050132 |
| 5.5 | M6 | 91 | 139 | XDB1055139 |
| 6.0 | M7 | 91 | 139 | XDB1060139 |
| 6.5 | M7 | 97 | 148 | XDB1065148 |
| 8.0 | M9 | 109 | 165 | XDB1080165 |
| 10.0 | M11 | 121 | 184 | XDB1100184 |



| | | | | | | |
|------------|------|------|------|------|-------|------|
| ≤ø2.0mm | 3980 | 4780 | 7170 | 3980 | 12740 | 3990 |
| ø2.1-4mm | 1990 | 2390 | 3590 | 1990 | 6370 | 1990 |
| ø4.1-6mm | 1330 | 1590 | 2390 | 1330 | 4250 | 1330 |
| ø6.1-8mm | 1000 | 1190 | 1790 | 1000 | 3190 | 1000 |
| ø8.1-10mm | 900 | 960 | 1430 | 900 | 2650 | 900 |
| ø10.1-12mm | 660 | 900 | 1190 | 660 | 2120 | 660 |
| ø12.1-13mm | 570 | 680 | 1020 | 570 | 1820 | 570 |

117 LMN Silicone

Perimeter sealing of windows & door frames..

With its excellent adhesion to virtually all construction materials, easy application and permanent elasticity with movement amplitude of up to 20%, Xpert 117 LMN silicone is ideally suited to sealing all kinds of building joints and edges inside and out, especially around door and window frames.

- 1-component neutral silicone sealant
- Very easy to apply with the Xpert heavy duty Dripless Mastic gun
- Excellent adhesion to almost all building materials (see technical datasheet online)
- Permanent elasticity
- For outdoor and indoor applications
- High resistance to ageing, weathering and UV
- Temperature resistance: -50°C - +150°C
- Skin formation time: 15 mins at 23°C and 50% relative humidity
- Curing rate: 2.5 – 3mm after 24h at 23°C and 50% relative humidity
- Available in Snow White, Brown RAL 8017, Black RAL 9005, Clear and Anthracite Grey RAL 7016



| Colour | RAL | Size | Part Code | Box Qty. |
|------------------------|---------|-------|-----------|----------|
| Snow White | - | 280ml | SIL20000 | 12 |
| Clear | - | 280ml | SIL20006 | 12 |
| Brown | RAL8017 | 280ml | SIL20002 | 12 |
| Black | RAL9005 | 280ml | SIL20005 | 12 |
| Anthracite Grey | RAL7016 | 280ml | SIL20007 | 12 |

Scan the code for our Technical Data Sheet



Consumables

Takes care of all those essential clean up jobs, quick fixes and final flourishes.



Super Glue

- Achieves fast bonding of most non-porous surfaces
- High bond strength
- Available in low, medium or high viscosity

| | | |
|----|------------------|------------------|
| | 20mg Bottle | 50mg Bottle |
| LV | GLU20202B | - |
| MV | GLU20201B | GLU20501B |
| HV | GLU20203 | GLU20503 |



Super Glue Activator

- Solvent-based super glue activator
- Works with Xpert super glue to accelerate adhesion
- Reduces bloom and odour
- Non-yellowing formulation
- 200ml aerosol spray can

GLU72204



PVCu Cream Cleaner

- Heavy-duty cleaner removes dirt and grime on PVCu plastic materials
- Suitable for both domestic and industrial usage
- Non-hazardous
- Apply with a cloth
- 1 litre bottle

PUC10100



PVCu Solvent Cleaner

- Powerful solvent-based cleaner removes even ingrained dirt
- Suitable for use on all PVCu-based plastics
- Non-smear
- Fast acting
- 1 litre bottle

SOL10100



Glass Cleaner

- Easy-to-use window cleaner
- Fast-acting, non-smear
- Available in 1L spray or 5L and 25L refills

| | |
|-----------------|-----------------|
| 1 litre spray | PGC10100 |
| 5 litre refill | PGC10500 |
| 25 litre refill | PGC12500 |

Xpert Credentials

Why Xpert tools are always right for the job...

ESSENTIAL - We've listened to what the market wants and responded with a range of carefully selected, tried-and-tested tools and equipment to fulfil every glazing and fenestration application.

RELEVANT - Our tools and accessories are designed by people in the trade. Their hands-on knowledge about which tools work and how they're used has gone straight into product development to turn out practical, just-the-job kit with some clever features that enhance usability and give great results.

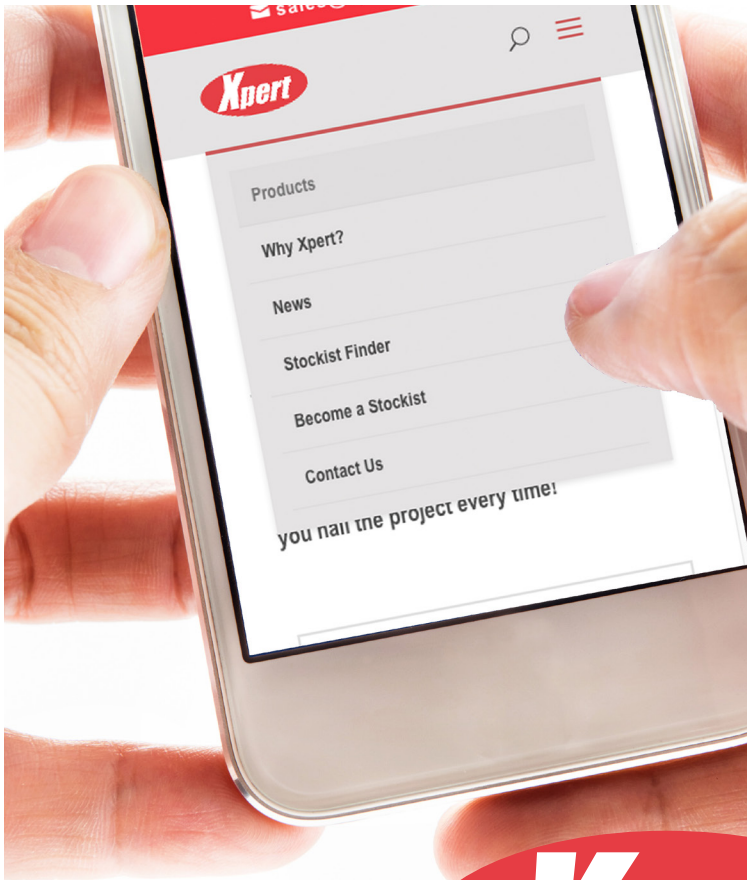
EXCELLENCE - Out of the tens of thousands of Xpert products sold last year, we received just a handful of returns. That proves our products hit the spot with fitters and fabricators in terms of features, quality and durability.

RELIABLE - Xpert offers a 1-year warranty across the entire product range except for air tools which come with a 3-month warranty. All warranty claims need to be returned to us along with a returns number for examination. Please note, air tools need to be oiled daily. Failure to do this will invalidate your warranty.

RIGHT-PRICED – We work hard to ensure our products achieve the ideal balance of price and performance to offer customers cracking value for money and give premium brands a run for their money!

All things Xpert tools on tap!

Visit www.xperttools.co.uk to...



- ✓ Find comprehensive product information for the entire range
- ✓ Read up-to-the-minute news, top tips & announcements
- ✓ Find out about the warranty offered on all Xpert tools
- ✓ Download the latest Xpert tools literature
- ✓ Stay informed by subscribing to our mailing list
- ✓ Locate your nearest Xpert tools stockist
- ✓ Discover how to become a stockist
- ✓ Get in touch with us

www.xperttools.co.uk





www.xperttools.co.uk

Your nearest stockist of Xpert products :